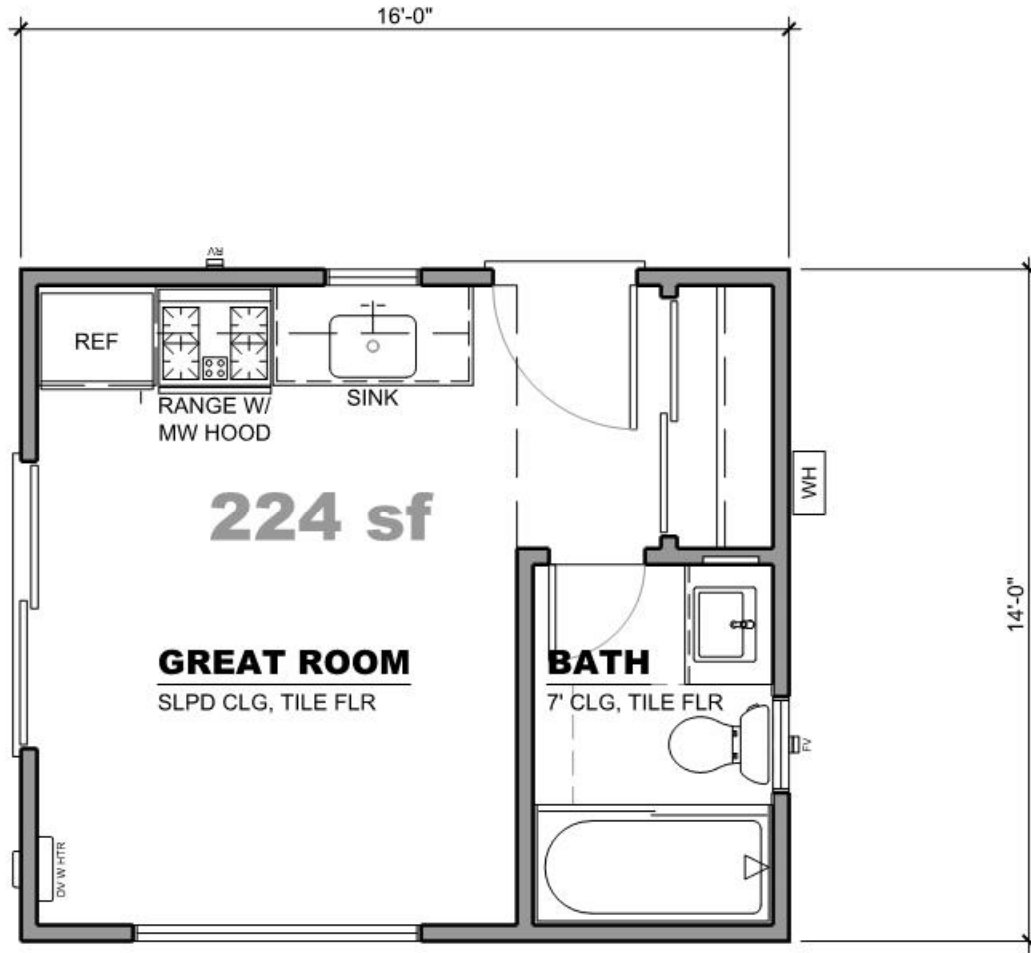


studio - 224 sf



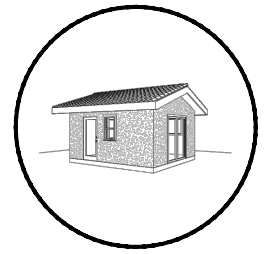
682 SECOND ST
ENCINITAS, CA
(760) 753 2464
DZNPARTNERS.COM

THE MATERIALS IN THIS DOCUMENT ARE CONCEPTUAL AND SHOULD NOT BE TREATED AS WORKING DRAWINGS OR CONSTRUCTION DOCUMENTS. THE USER AGREES TO HOLD THE ARCHITECT AND ENGINEER HARMLESS FROM ANY AND ALL CLAIMS, DAMAGES, SUITS AND DEMANDS ON ACCOUNT OF ANY INJURY, DAMAGE OR LOSS TO PERSONS OR PROPERTY ARISING FROM THE ORIGINAL OR REPRODUCED MATERIALS ARISING OUT OF THE USE OF THESE MATERIALS.

CITY OF ENCINITAS
PERMIT READY
ACCESSORY
DWELLING UNIT
PROGRAM



studio 0



PARTNERS

682 SECOND ST

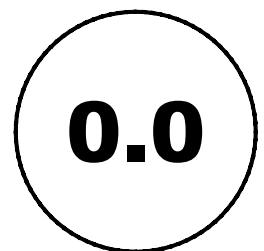
ENCINITAS, CA

(760) 753 2464

DZNPARTNERS.COM

THE MATERIALS IN THIS DOCUMENT ARE CONCEPTUAL, SHOULD NOT BE TREATED AS WORKING DRAWINGS OR CONSTRUCTION DOCUMENTS, AND ARE NOT TO BE USED IN ANY SUFFICIENT LEVEL OF DETAIL TO BE USED IN THE CONSTRUCTION OF IMPROVEMENTS FOR ANY SPECIFIC SITE OR PROJECT. BY USING THESE MATERIALS, THE USER AGREES TO RELEASE THE CITY OF ENCINITAS AND THE ARCHITECT/ENGINEER WHO PREPARED THESE MATERIALS FROM ANY AND ALL CLAIMS, LIABILITIES, SUITS, AND DEMANDS ON ACCOUNT OF ANY INJURY, DAMAGE OR LOSS TO PERSONS OR PROPERTY, INCLUDING ANY OR GREAT, OF ECONOMIC LOSSES, ARISING OUT OF THE USE OF THESE MATERIALS.

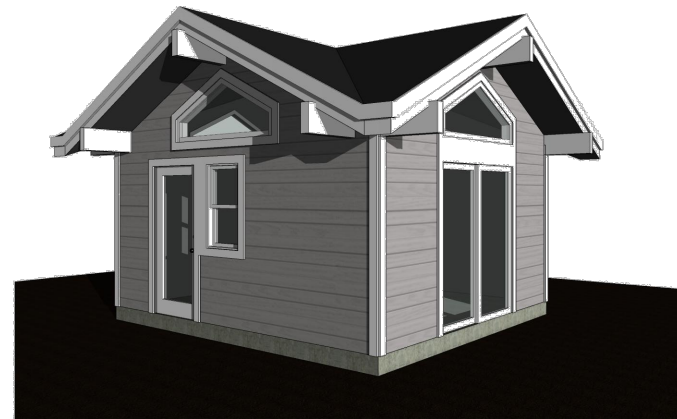
CITY OF ENCINITAS
PERMIT READY
ACCESSORY
DWELLING UNIT
PROGRAM



a



b



c

color renderings