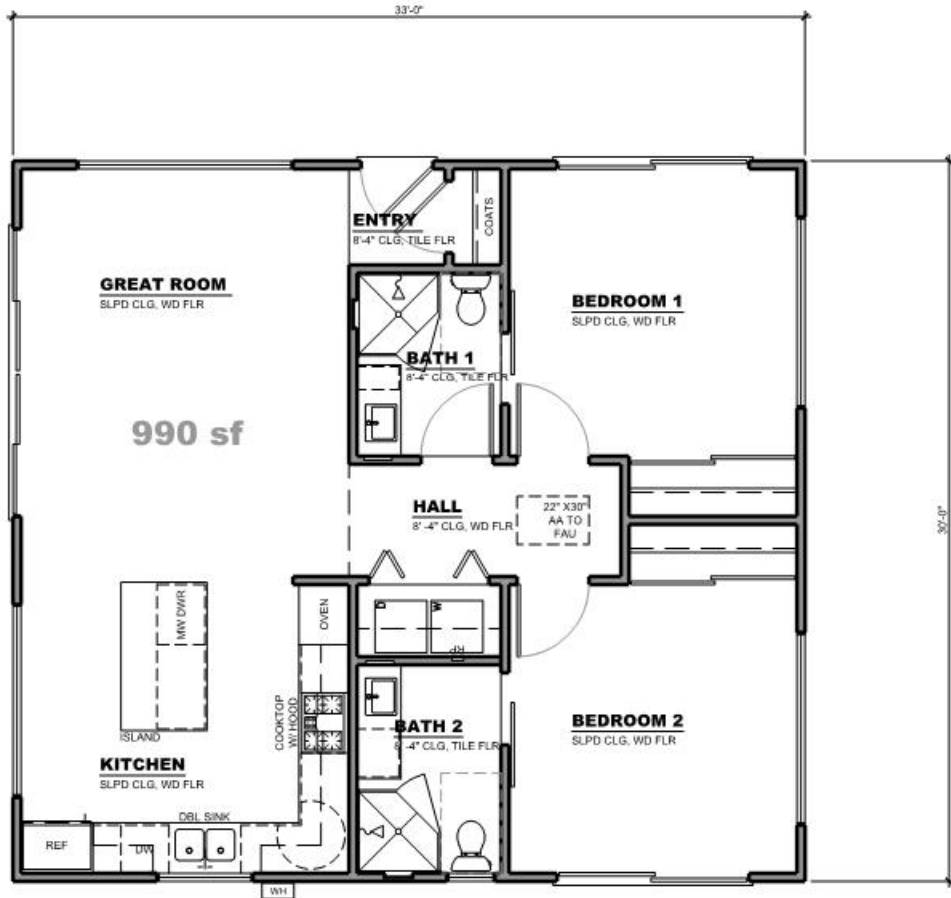


# 2 bedroom / 2 bath - 990 sf



682 SECOND ST  
ENCINITAS, CA  
(760) 753 2464  
DZNPARTNERS.COM

THE MATERIALS IN THIS DOCUMENT ARE CONCEPTUAL. SHOULD NOT BE TREATED AS WORKING DRAWINGS OR CONSTRUCTION DOCUMENTS. NO PART OF THIS DOCUMENT, IN ANY MANNER, SHALL BE USED IN THE CONSTRUCTION OF IMPROVEMENTS FOR ANY SPECIFIC SITE OR PROJECT. BY USING THESE MATERIALS, THE USER AGREES TO RELEASE THE CITY OF ENCINITAS AND THE ARCHITECT/ENGINEER WHO PREPARED THESE MATERIALS FROM ANY AND ALL CLAIMS, LIABILITIES, SUITS AND DEMANDS ON ACCOUNT OF ANY INJURY, DAMAGE OR LOSS TO PERSONS OR PROPERTY, INCLUDING ORIGINAL ECONOMIC LOSSES, ARISING OUT OF THE USE OF THESE MATERIALS.

CITY OF ENCINITAS  
PERMIT READY  
ACCESSORY  
DWELLING UNIT  
PROGRAM



# two bedroom 2



**a**

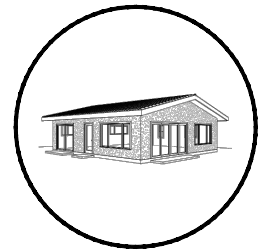


**b**



**c**

**color renderings**



PARTNERS

682 SECOND ST

ENCINITAS, CA

(760) 753 2464

DZNPARTNERS.COM

THE MATERIALS IN THIS DOCUMENT ARE CONCEPTUAL. SHOULD NOT BE TREATED AS WORKING DRAWINGS OR CONSTRUCTION MATERIALS. THE USER AGREES TO RELEASE THE CITY OF ENCINITAS AND THE ARCHITECT/ENGINEER WHO PREPARED THESE MATERIALS FROM ANY AND ALL CLAIMS, LIABILITIES, SUITS AND DEMANDS ON ACCOUNT OF ANY INJURY, DAMAGE OR LOSS TO PERSONS OR PROPERTY, INCLUDING ANY ORDERS OF ECONOMIC LOSSES ARISING OUT OF THE USE OF THESE MATERIALS.

CITY OF ENCINITAS  
PERMIT READY  
ACCESSORY  
DWELLING UNIT  
PROGRAM

