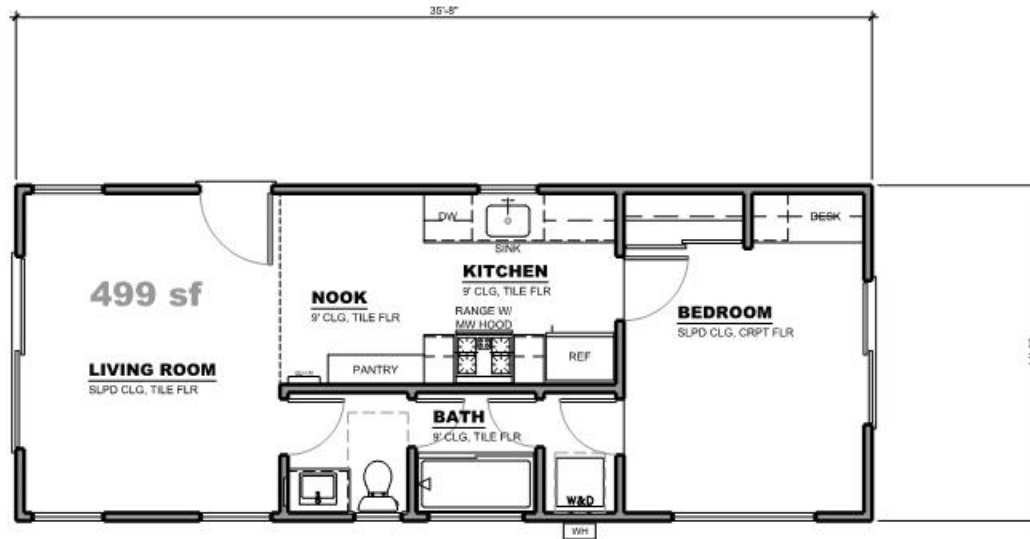


# 1 bedroom / 1 bath - 499 sf



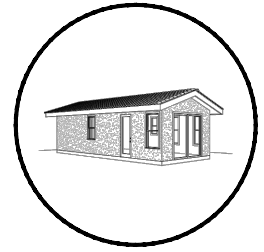
682 SECOND ST  
 ENCINITAS, CA  
 (760) 753 2464  
 DZNPARTNERS.COM

THE MATERIALS IN THIS DOCUMENT ARE CONCEPTUAL AND SHOULD NOT BE TREATED AS WORKING DRAWINGS OR CONSTRUCTION DOCUMENTS. THE USER AGREES TO HOLD THE ARCHITECT AND ENGINEER HARMLESS FROM ANY LIABILITY ARISING OUT OF THE USE OF THESE MATERIALS. BY USING THESE MATERIALS, THE USER AGREES TO RELEASE THE CITY OF ENCINITAS AND THE ARCHITECT/ENGINEER WHO PREPARED THESE MATERIALS FROM ANY AND ALL CLAIMS, DAMAGES, SUITS AND DEMANDS ON ACCOUNT OF ANY INJURY, DAMAGE OR LOSS TO PERSONS OR PROPERTY ARISING FROM OR RESULTING FROM THE USE OF THESE MATERIALS.



CITY OF ENCINITAS  
 PERMIT READY  
 ACCESSORY  
 DWELLING UNIT  
 PROGRAM

# one bedroom 1



**a**



**b**



**c**

**color renderings**



PARTNERS

682 SECOND ST

ENCINITAS, CA

(760) 753 2464

DZNPARTNERS.COM

THE MATERIALS IN THIS DOCUMENT ARE CONCEPTUAL, SHOULD NOT BE TREATED AS WORKING DRAWINGS OR CONSTRUCTION MATERIALS, AND ARE NOT TO BE USED IN ANY SUFFICIENT LEVEL OF DETAIL TO BE USED IN THE CONSTRUCTION OF IMPROVEMENTS FOR ANY SPECIFIC SITE OR PROJECT. BY USING THESE MATERIALS, THE USER AGREES TO RELEASE THE CITY OF ENCINITAS AND THE ARCHITECT/ENGINEER WHO PREPARED THESE MATERIALS FROM ANY AND ALL CLAIMS, LIABILITIES, SUITS AND DEMANDS ON ACCOUNT OF ANY INJURY, DAMAGE OR LOSS TO PERSONS OR PROPERTY, INCLUDING ANY OR GREAT ECONOMIC LOSSES ARISING OUT OF THE USE OF THESE MATERIALS.

CITY OF ENCINITAS  
 PERMIT READY  
 ACCESSORY  
 DWELLING UNIT  
 PROGRAM

